

WheelEEZ® C-Tug® All Terrain Conversion Kit
(WZ1-CT-ATCK-30) or (WZ1-CT-ATCK-24)



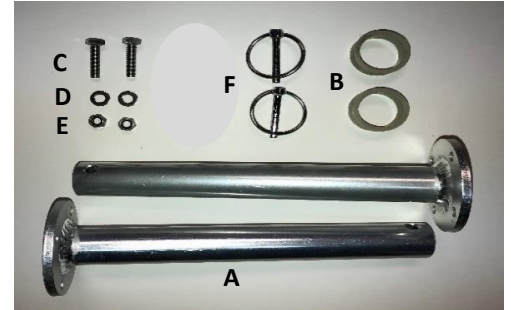
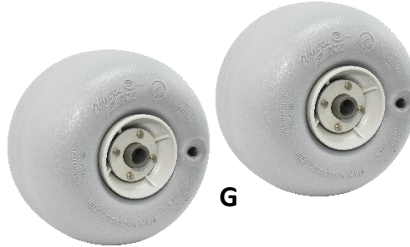
Instruction Sheet

This Kit Retrofits C-Tug® Carts With Plastic Axles ONLY!

*****IMPORTANT NOTE: THIS KIT REQUIRES IRREVERSIBLE MODIFICATIONS OF YOUR C-TUG® CART*****

Parts:

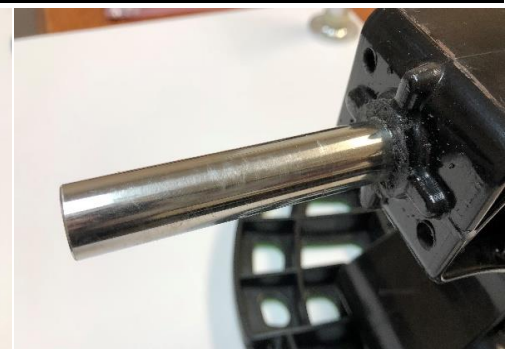
- A) Axle Extenders (2)
- B) Plastic Wheel Spacers (2)
- C) Hex Bolts - (2)
- D) Flat Washers (2)
- E) Nylock Nuts (2)
- F) Quick Clip Pins (2)
- G) WZ1-30UC or 24UB Wheels (2)



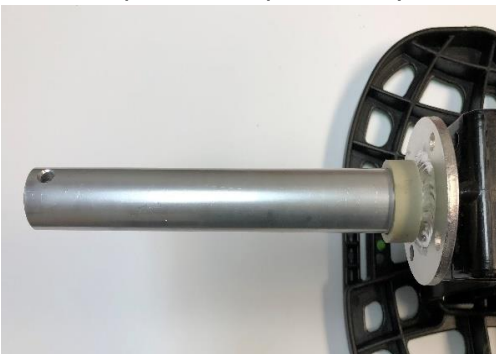
1. Use hacksaw, carefully cut around entire plastic axle portion only.



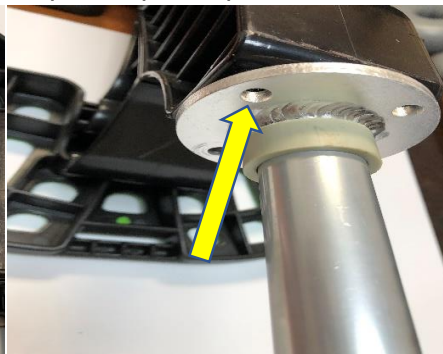
2. Use vise grip pliers to twist and pull off plastic portion of axle.



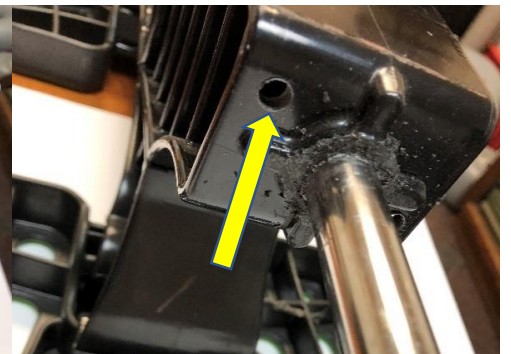
3. View of axle when plastic has been removed.



4. Install Axle Extender over cart's steel axle section.



5. Align one hole with cart's frame to drill 1/4" hole.



6. Hole position after drilling.



7. Install Axle Extender, bolt, washer and nut. Tighten securely.



8. Install WheelEEZ® Balloon Wheel over Axle Extender.



9. Install Quick Clip Pin.

CAUTION: DO NOT EXCEED C-TUG® PAYLOAD LIMITS